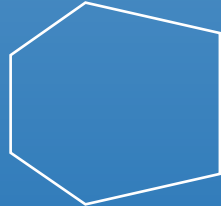
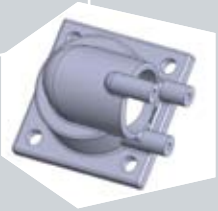
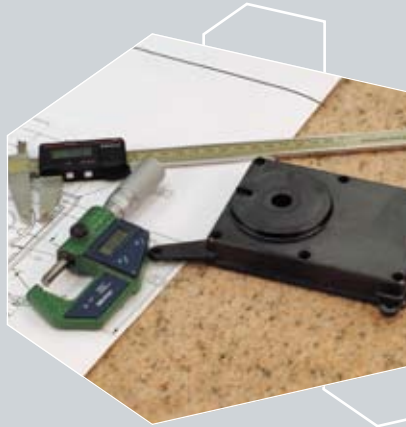


Proto Plastics

Experience. Integrity. Results.



Experienced,
full-service
supplier of custom
injection molded
parts and assemblies

A Trusted Partner

We know the pressures you face in bringing a new or redesigned product to market. Since 1969 we've supplied technically demanding injection molded parts and assemblies to prominent manufacturers who demand nothing but the best in quality, consistency, price and on-time delivery. Proto Plastics is a fully integrated manufacturer offering part design assistance, mold making, molding, finishing operations, assembly, and tailored delivery programs. Our customers, most of whom we have served for 10 years or longer, will tell you that we really know our business. Our management team alone has more than 130 years of industry experience. Our modern 65,000 sq. ft. facility provides ample space for all operations and future growth.

Quality is everything at Proto Plastics, and we believe our fully documented ISO-9001:2000 program is second to none. Our customer satisfaction surveys repeatedly rank us above the 90th percentile in overall satisfaction.

“Our product is delivered on time and is of the highest quality. Overall, a great supplier.”

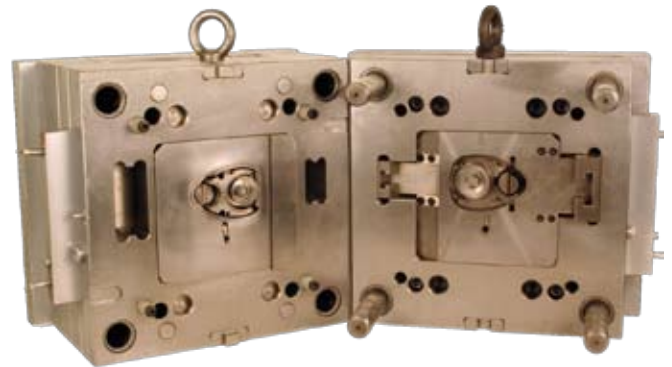
M. F.
Buyer
Aircraft Component
Manufacturer



Engineering Support

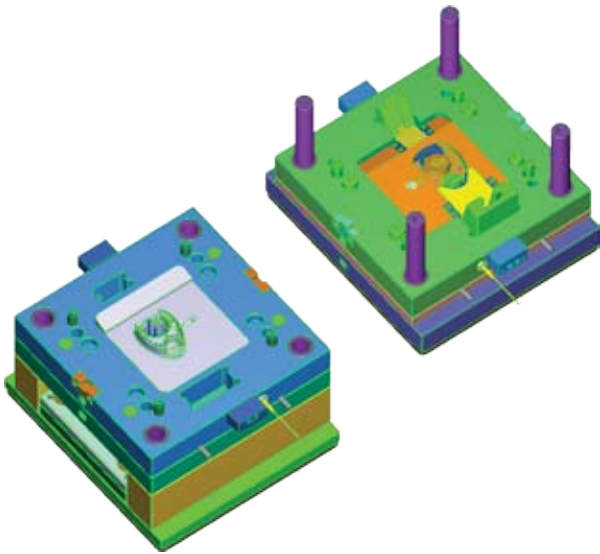
The process begins with the submission of your initial part design to our staff of experienced part and tooling engineers. Using the latest release of SolidWorks modeling software, we help optimize part design to ensure that the part can be economically molded without compromising its ultimate performance and functionality.

We also assist in the conversion of metal parts into high performance plastic parts by offering guidance in the design, engineering, material selection, and production processes.



Mold Making

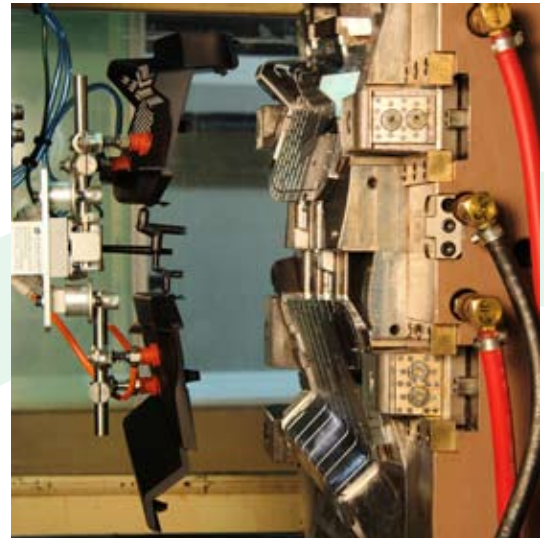
Once the part design is approved, mold construction begins utilizing our in-house EDM and CNC machining capability guided by Mastercam programming software. In addition to new molds, we modify, repair and maintain existing molds. We also outsource tooling construction to a number of pre-qualified domestic and offshore mold-making partners. We guarantee all molds that we manufacture or source for the life of the customer's program. It all adds up to trust, which is why our customers keep coming back.



Injection Molding

Proto Plastics operates 15 Cincinnati Milacron injection molding presses in a wide range of tonnages, including several with automated robots and insert/overmolding capability. All presses are controlled and scheduled by a real-time, plant-wide ERP system, which gives us great flexibility and the ability to spot and correct minor process deviations before they grow into larger problems. For years we have run a three-shift operation to maximize our cost efficiency and response to schedule changes and emergency needs.

We have extensive knowledge of the processing and performance characteristics of a wide variety of plastics, and can thus recommend the best material for your application. We have processed nearly 200 different plastics including sophisticated engineering resins, thermoplastic rubbers and elastomers, filled/reinforced plastics and other specialty compounds, and basic commodity resins.



Finishing and Assembly

For those in need of more than just a molded part, our finishing department provides a variety of services that will streamline your production schedule:

- Ten sonic welders for insertion and joining of plastic parts
- Pad printing in multiple colors and new clichés are made in-house in a matter of hours
- Finishing operations including CNC machining, milling, drilling, and tapping
- Assembly and testing of molded and purchased components
- Post-assembly leak checking, kitting, cleaning, labeling, bar coding and packaging
- Sourcing and stocking screw machine parts, gaskets, lenses, electronic connectors, threaded inserts, fasteners, and numerous other assembly components

Supply Chain Services

Proto Plastics understands your need for consistently reliable delivery. We have the experience, resources, and capacity to handle numerous forms of KANBAN, Just-In-Time, and dock-to-stock programs. Our real-time IQMS ERP system ensures that materials, components, and press capacity are available to quickly react to sudden changes in customer demand.

“There are very few vendors I can say I ‘enjoy’ working with. You are one of the few.”



**C. S.
Mechanical Engineer
Electronics Manufacturer**



Proto Plastics, Inc.
316 Park Avenue • Tipp City, OH 45371
(937) 667-8416 • Fax: (937) 667-2536
E-mail: protosales@protoplastics.com
www.protoplastics.com

“*Very good support & consistent parts. Quick resolution to engineering issues.*”

RM
Sr. Mechanical Engineer
Testing Systems
Solution Provider



Contact Us

If your project involves custom plastic molding or assembly, we invite you to get in touch with us. We'd be pleased to have you tour our facility and see first hand our wide range of design, tooling, production, finishing, and assembly capabilities, and our unwavering focus on quality, customer service, and integrity in every department. Our end goal is to see your project launched on time and on budget, while being a reliable and trusted partner throughout the life cycle of your products.

To talk to an applications engineer who understands your needs and challenges, call (937) 667-8416 or E-mail protosales@protoplastics.com. For greater detail on all the ways we can help you, visit us online at www.protoplastics.com.

Quality Above All

For years, Proto Plastics has been a Preferred Supplier to a number of major manufacturers who have zero tolerance for non-conforming parts. We consistently meet or exceed their expectations, while complying with ANSI Standard Y14.5 (GD&T) and the procedural and documentation requirements of ISO-9001:2000.

- Our Quality Management staff is very experienced in dealing with issues related to plastic components and assemblies.
- We have been ISO 9001 Certified since 1998. During repeated inspections and audits over that time frame, our Quality Management System has never had a non-conformity.
- Our Inspection Lab features advanced measurement and testing equipment, including a Brown & Sharpe Microval Coordinate Measuring Machine (CMM), an OGP Optical Comparator, and a 50X Microscope Vision System.
- New parts undergo a rigorous qualification process prior to being released to production. This includes first article inspections and pre-production samples and may include Process Capability Studies and PPAP's (Production Part Approval Process).
- Purchased components and resin are subject to incoming inspection instructions. Throughout the production process parts are checked to ensure dimensional and functional compliance with inspection plans.
- The Quality Management Program itself is constantly monitored and improved through internal audits, analysis of corrective or preventive action requests and product conformity data, and periodic customer satisfaction surveys.